



## JETMASTER (VIC) PTY LTD

ACN 005 872 159 ABN13 659 821 337

444 Swan St. Richmond VIC 3121 PO Box 5051 Burnley 3121

Phone: (03) 9429 5573 Fax: (03) 9427 0031

Website: www.jetmaster.com.au Email: info@jetmastervic.com.au

# HEAT & GLO™

# JETMASTER AIR VENTILATED ZERO CLEARANCE FIREPLACE

---



AmdeL Limited  
A.C.N. 008 127 802

MATERIALS SERVICES  
Certified to AS 3901 / ISO 9001

31 Flemington Street  
FREWVILLE SA 5061

Telephone: (08) 372 2700  
Facsimile: (08) 379 6623

### DOMESTIC SOLID FUEL BURNING APPLIANCE – TEST REPORT SUMMARY

|                            |                                           |                   |                 |
|----------------------------|-------------------------------------------|-------------------|-----------------|
| <b>CLIENT:</b>             | Jetmaster (Vic) Pty Ltd                   | <b>REPORT NO:</b> | <b>M7100/92</b> |
| <b>CLIENT REF:</b>         | Request by Jetmaster                      | <b>DATE:</b>      | 19/8/92         |
| <b>TEST SPECIFICATION:</b> | Australian Standard 2918:1990, Appendix B |                   |                 |
| <b>TEST FUEL:</b>          | Wood                                      | <b>TEST DATE:</b> | 6 August 1992   |

#### **APPLIANCE:**

**Model:** Jetmaster Zero Clearance Fireplace  
**Manufactured by:** Jetmaster (Vic) Pty Ltd

#### **FLUE SYSTEM:**

Ventilated single casting flue system

#### **HEARTH:**

6mm thick sheet of fibre cement with a layer of 100mm thick clay bricks on top which extended 300mm in front and 200mm either side of the firebox opening.

#### **TEST INSTALLATION:**

The appliance was installed in accordance with the manufacturer's specifications, Jetmaster drawing numbers ZC8/92/1 and ZC8/92/2.

The minimum appliance/flue casing clearance from combustible materials was 25mm.

#### **CONCLUSION:**

**When installed as described above** the appliance tested complied with the requirements of AS 2918:1990.

Investigation and Report by: Michael J Greenwood

For William V Yeo  
Manager  
Materials Services

Approved Signatory  
Michael J Greenwood  
Product Testing Officer

---

Laboratory Registration  
No: 2326



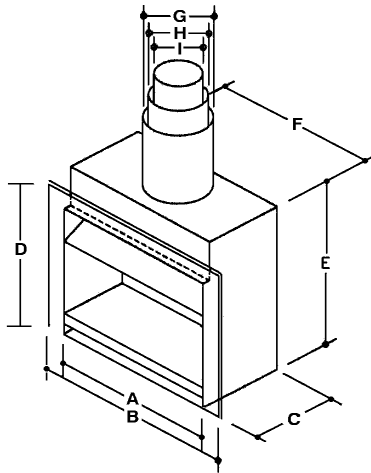
**JETMASTER (VIC) PTY LTD**

ACN 005 872 159 ABN13 659 821 337

444 Swan St. Richmond VIC 3121 PO Box 5051 Burnley 3121

Phone: (03) 9429 5573 Fax: (03) 9427 0031

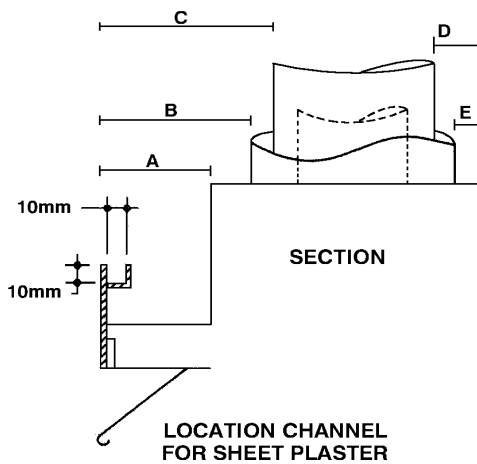
Website: www.jetmaster.com.au Email: info@jetmastervic.com.au



**CHART 1**

| DIMENSIONS IN MILLIMETRES |      |      |     |     |      |      |     |     |     |
|---------------------------|------|------|-----|-----|------|------|-----|-----|-----|
| MODEL                     | A    | B    | C   | D   | E    | F    | G   | H   | I   |
| 400/440                   | 430  | 560  | 365 | 685 | 820  |      | 300 | 250 | 200 |
| 500                       | 500  | 700  | 430 | 725 | 930  | 650  | 300 | 250 | 200 |
| 600                       | 600  | 800  | 430 | 725 | 930  | 750  | 300 | 250 | 200 |
| 700SH                     | 700  | 900  | 430 | 725 | 930  | 850  | 300 | 250 | 200 |
| 700D                      | 700  | 900  | 475 | 775 | 985  | 850  | 325 | 275 | 225 |
| 850                       | 850  | 1050 | 525 | 825 | 1060 | 1000 | 350 | 300 | 250 |
| 1050                      | 1050 | 1250 | 570 | 875 | 1160 | 1200 | 400 | 350 | 300 |

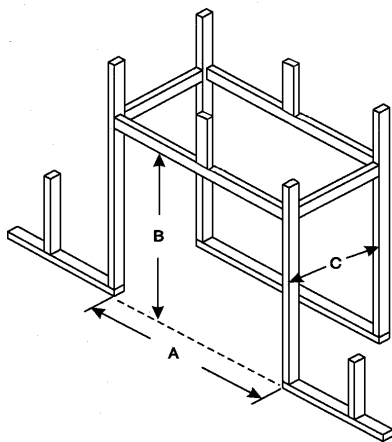
\*NOTE: Dimension "G" travels min. 500mm



**CHART 2**

| DIMENSIONS IN MILLIMETRES |    |                                   |            |    |    |
|---------------------------|----|-----------------------------------|------------|----|----|
| MODEL                     | A  | B                                 | C          | D  | E  |
|                           |    | Allow 25mm                        | Allow 50mm |    |    |
|                           |    | clearance to combustible material |            |    |    |
| 500                       | 50 | 85                                | 110        | 70 | 45 |
| 600                       | 50 | 85                                | 110        | 70 | 45 |
| 700SH                     | 50 | 85                                | 110        | 70 | 45 |
| 700D                      | 45 | 110                               | 135        | 75 | 40 |
| 850                       | 45 | 135                               | 170        | 65 | 40 |
| 1050                      | 45 | 105                               | 130        | 60 | 40 |

\*NOTE: Dimension "G" travels min. 500mm



**CHART 3**

| FRAMING SPECIFICATIONS |                          |                           |                          |                                                               |
|------------------------|--------------------------|---------------------------|--------------------------|---------------------------------------------------------------|
| MODEL                  | Internal Frame Width (A) | Internal Frame Height (B) | Internal Frame Depth (C) | Allow Additional Height, Width and Depth for Cast Iron Fascia |
| 400/440                | 610                      | 1000                      | 455                      | *                                                             |
| 500                    | 750                      | 1100                      | 455                      | N/A                                                           |
| 600                    | 850                      | 1100                      | 455                      | *                                                             |
| 700S                   | 950                      | 1100                      | 455                      | *                                                             |
| 700D                   | 950                      | 1150                      | 500                      | N/A                                                           |
| 850                    | 1100                     | 1300                      | 550                      | N/A                                                           |
| 1050                   | 1300                     | 1400                      | 600                      | N/A                                                           |

\* ZERO CLEARANCE JETMASTER WITH RECESSED FASCIA  
- ALLOW ADDITIONAL DEPTHS AS FOLLOWS

\* Dimensions on application for extra width and height required for cast iron fascias

|                         |       |
|-------------------------|-------|
| Recessed tiled fascias  | 160mm |
| Recessed arched fascias | 140mm |
| Flat fascias            | 40mm  |



## JETMASTER (VIC) PTY LTD

ACN 005 872 159 ABN13 659 821 337

444 Swan St. Richmond VIC 3121 PO Box 5051 Burnley 3121

Phone: (03) 9429 5573 Fax: (03) 9427 0031

Website: www.jetmaster.com.au Email: info@jetmastervic.com.au

HEAT & GLO™

# ZERO CLEARANCE - TIMBER CONSTRUCTION

## Installation Instructions.

### 1 Base and hearth.

a) The hearth and the base beneath the Jetmaster must be made of non-combustible materials. The thickness of the base is as follows:

| Model                | Hearth thickness |
|----------------------|------------------|
| Jetmaster 400-700D   | 26mm             |
| Jetmaster 850 - 1050 | 100mm            |

b) Position unit on finished hearth level. Ensure air intakes at bottom front of unit are not obstructed.

### 2 Flues.

a) Rivet stainless steel flue to spigot and thereafter at each joint. Fit inner casings to spigot and join with three 25 mm self-tapping screws thereby maintaining air gap. Fit outer casings to outer spigot. If flue is to be left exposed terminate outer casing 1000mm above ceiling line. Ensure that flues are ventilated top and bottom.

b) Use minimum 3.6 metres flue. See chart "Minimum Flue Heights for Open Fireplaces" to determine exact flue requirements.

c) Maintain a minimum clearance between outer flue and combustible materials of 50mm.

d) Provide flashing where flue penetrates roof and fit cowl.

### 3 Framing.

a) Construct timber frame, laying studs at face of fireplace on edge.

b) Select framing sizes from Figure 2. These measurements allow for 25mm clearance from combustible frame and a raised hearth of 100mm.

c) Keep clearance from top of unit 50mm.

d) Note that depth requirements vary with the use of a cast iron fascia.

e) Overall frame width will be determined by size of selected mantelpiece.

### 4 Plaster.

a) Unit must be installed and flue run **PRIOR** to plastering.

b) The Zero Clearance casing has a location channel for plaster to slot into. This may be the final chosen finish.

c) With a cast iron fascia, cut the plaster around the fascia. Keep the face of the plaster and the fascia flush to fit the mantel.



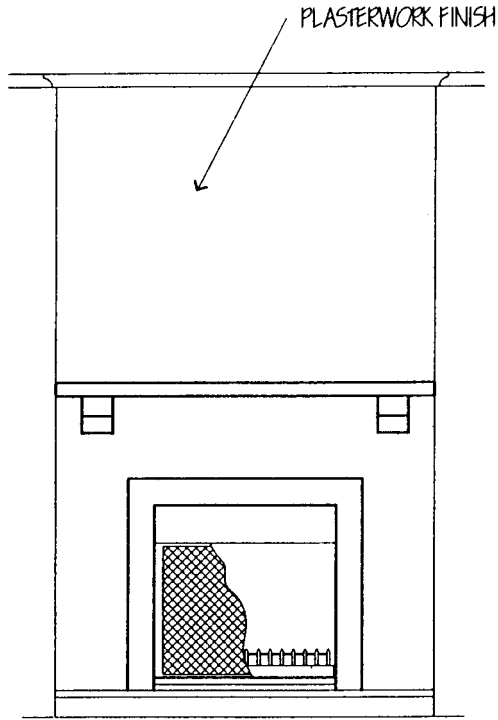
**JETMASTER (VIC) PTY LTD**

ACN 005 872 159 ABN13 659 821 337

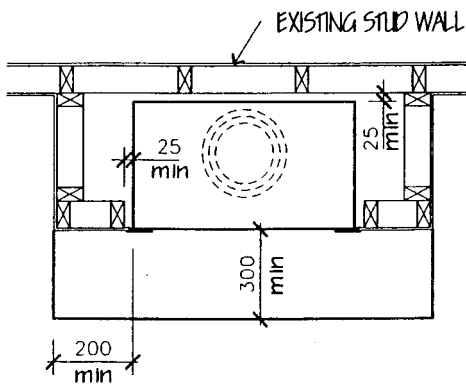
444 Swan St. Richmond VIC 3121 PO Box 5051 Burnley 3121

Phone: (03) 9429 5573 Fax: (03) 9427 0031

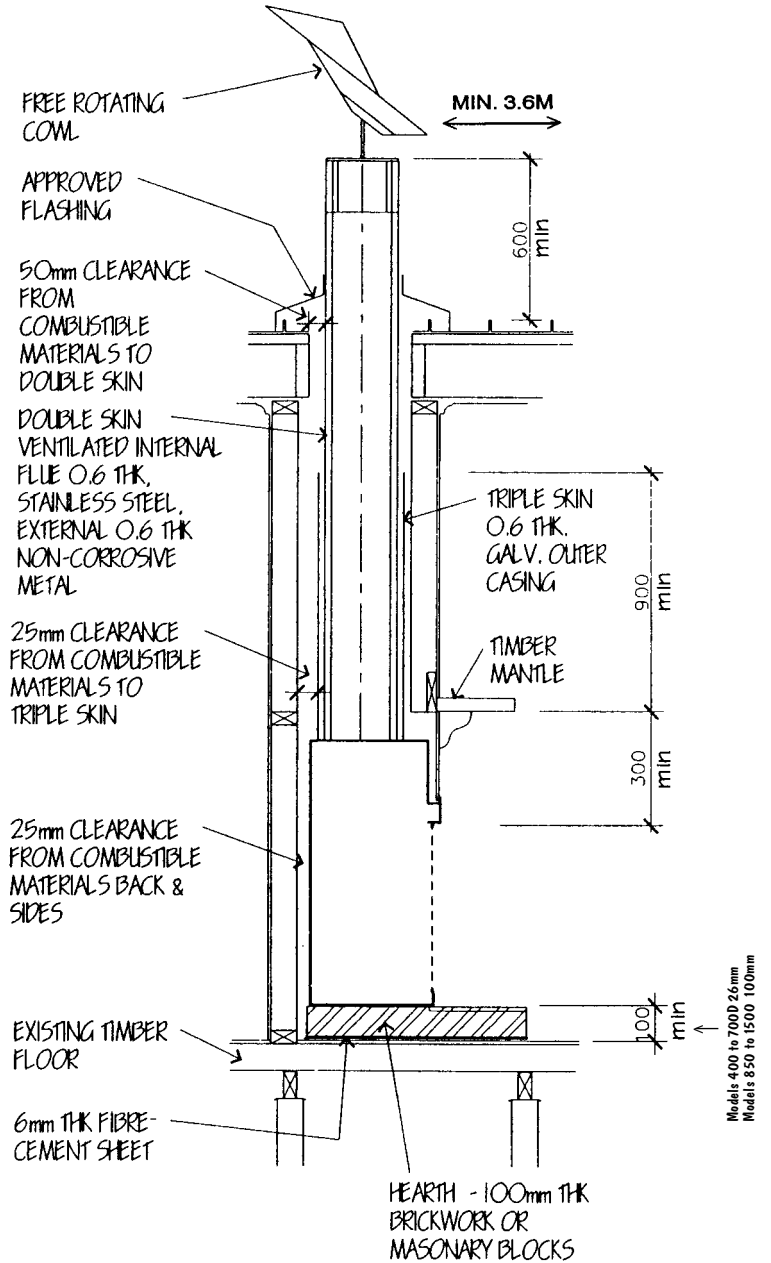
Website: www.jetmaster.com.au Email: info@jetmastervic.com.au



**ELEVATION**



**PLAN**



Models 400 to 700D 26mm  
Models 850 to 1500 100mm

**SECTION**

**\* IMPORTANT NOTE \***  
 UNIT TO BE ELEVATED TO ENSURE AIR INTAKES ARE NOT OBSTRUCTED AND TO FINISH FLUSH WITH FINISHED HEIGHT OF HEARTH.

**ZERO CLEARANCE - TIMBER CONSTRUCTION**



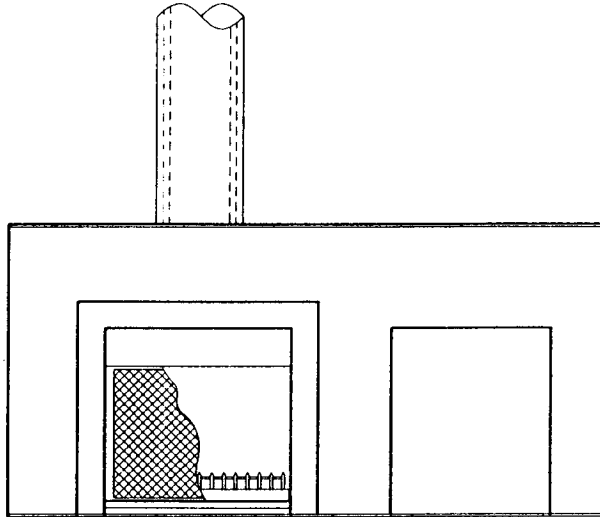
# JETMASTER (VIC) PTY LTD

ACN 005 872 159 ABN13 659 821 337

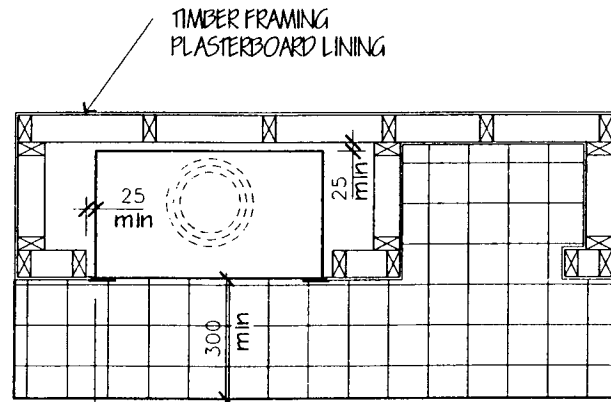
444 Swan St. Richmond VIC 3121 PO Box 5051 Burnley 3121

Phone: (03) 9429 5573 Fax: (03) 9427 0031

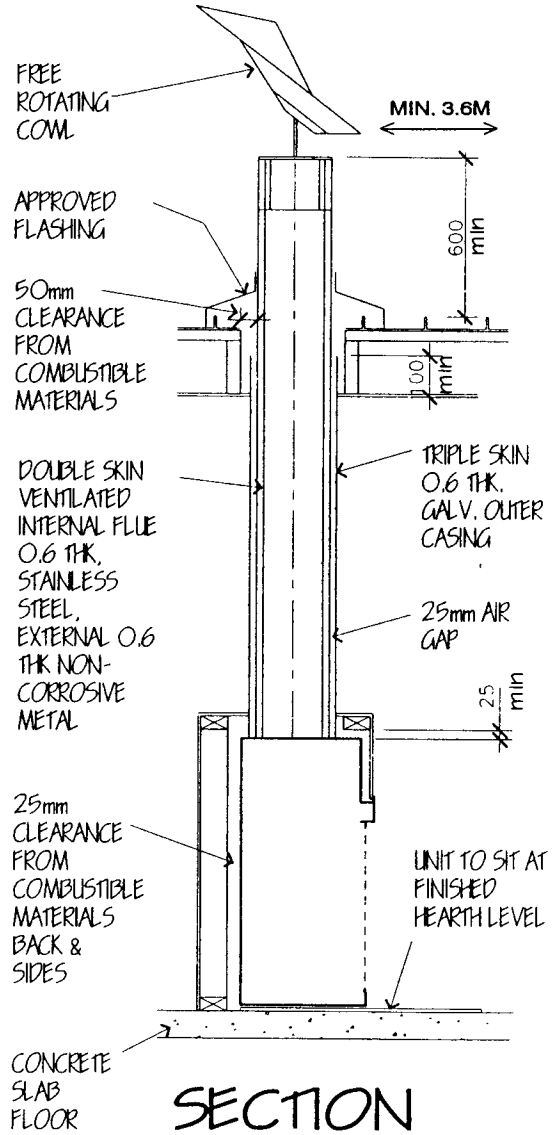
Website: www.jetmaster.com.au Email: info@jetmastervic.com.au



### ELEVATION



### PLAN



### SECTION

**\* IMPORTANT NOTE \***  
UNIT TO BE ELEVATED TO ENSURE AIR INTAKES ARE NOT OBSTRUCTED AND TO FINISH FLUSH WITH FINISHED HEIGHT OF HEARTH.

## ZERO CLEARANCE - TIMBER CONSTRUCTION