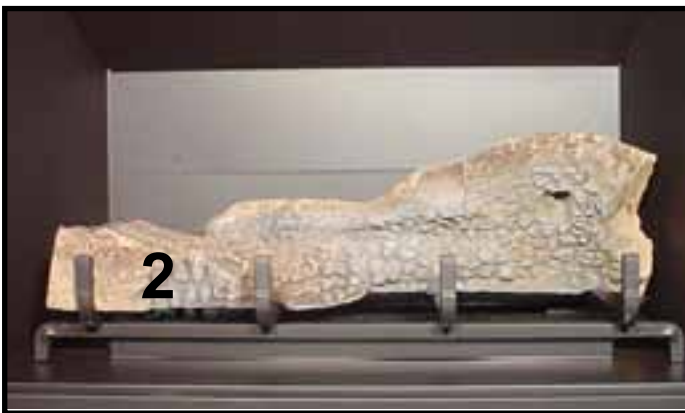


Carefully remove the logs from the packaging. **CAUTION:** Logs are fragile!



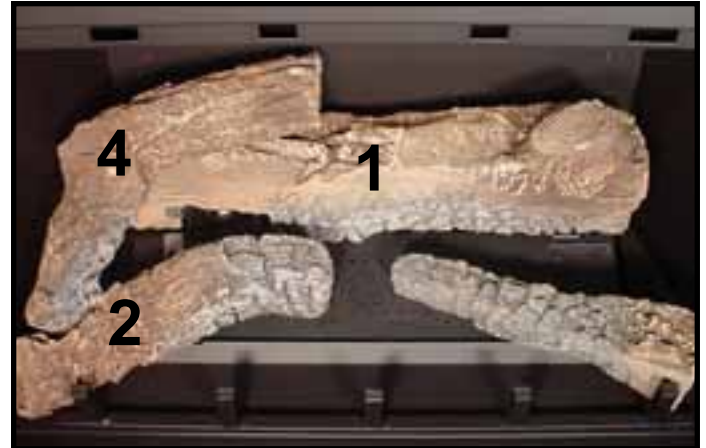
**LOG #1 (SRV327-701):** Place log #1 at the rear of the unit, with the left edge behind the tab on the pilot bracket. The right side sits behind the tab on the support bracket.



**LOG #2 (SRV2033-701):** Locate the bottom groove of log #2 over the left most grate tine and align over the burner by placing the log slot over the burner tab as shown.



**LOG #3 (SRV705-703):** Rest log #3 against the right front grate corner and place its slot over the right burner tab.



**LOG #4 (SRV530-716):** Place the left end of log #4 in the groove on log #2 and the right end on log #1 as shown.



**LOG #5 (SRV438-724):** Locate the top of log #5 onto log #1 and log #3, and place the bottom on the right side of the fourth grate tine.



**LOG #6 (SRV540-704):** Place log #6 against the second and third grate tines.  
If sooting occurs, the logs might need to be repositioned slightly to avoid excessive flame impingement.